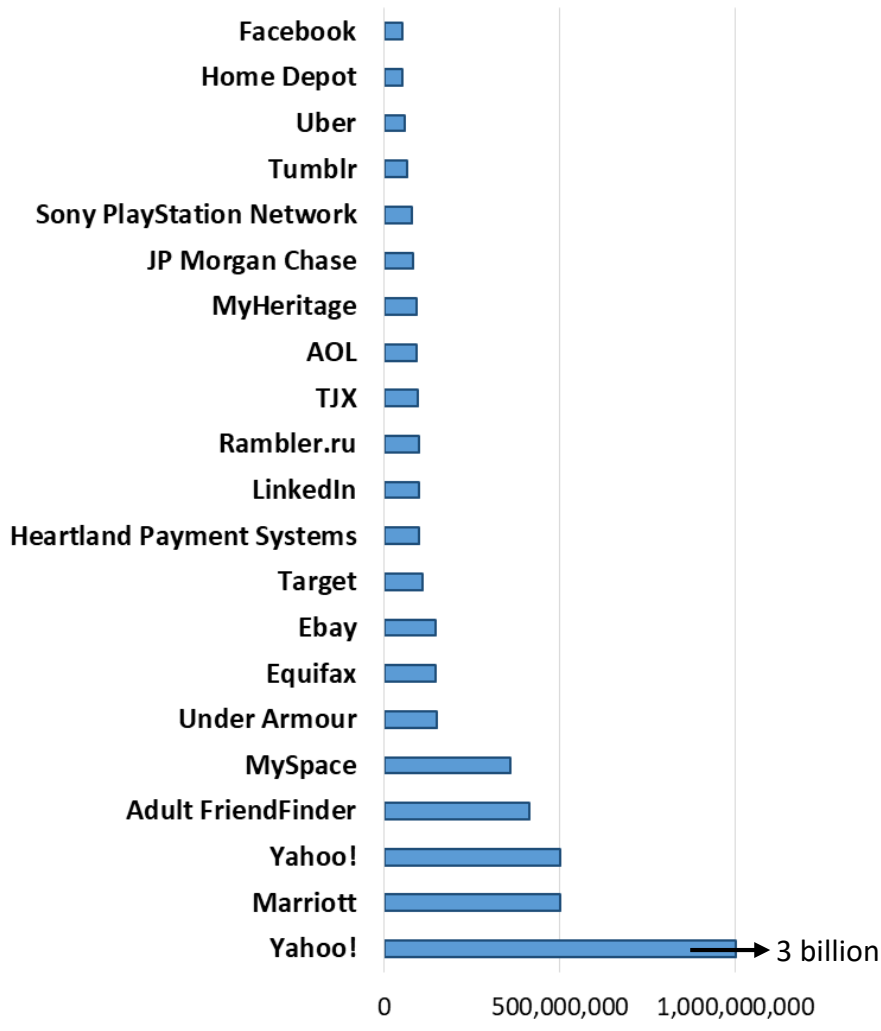


Case for Action

Accounts Stolen from Data Breaches 2011 – today



- Cyber Attacks are Real, are Severe, and are Increasing

- Loss of control systems

- Loss of organizational function

- \$6 trillion estimated damage by 2021

- NotPetya Malware - **\$10 billion**

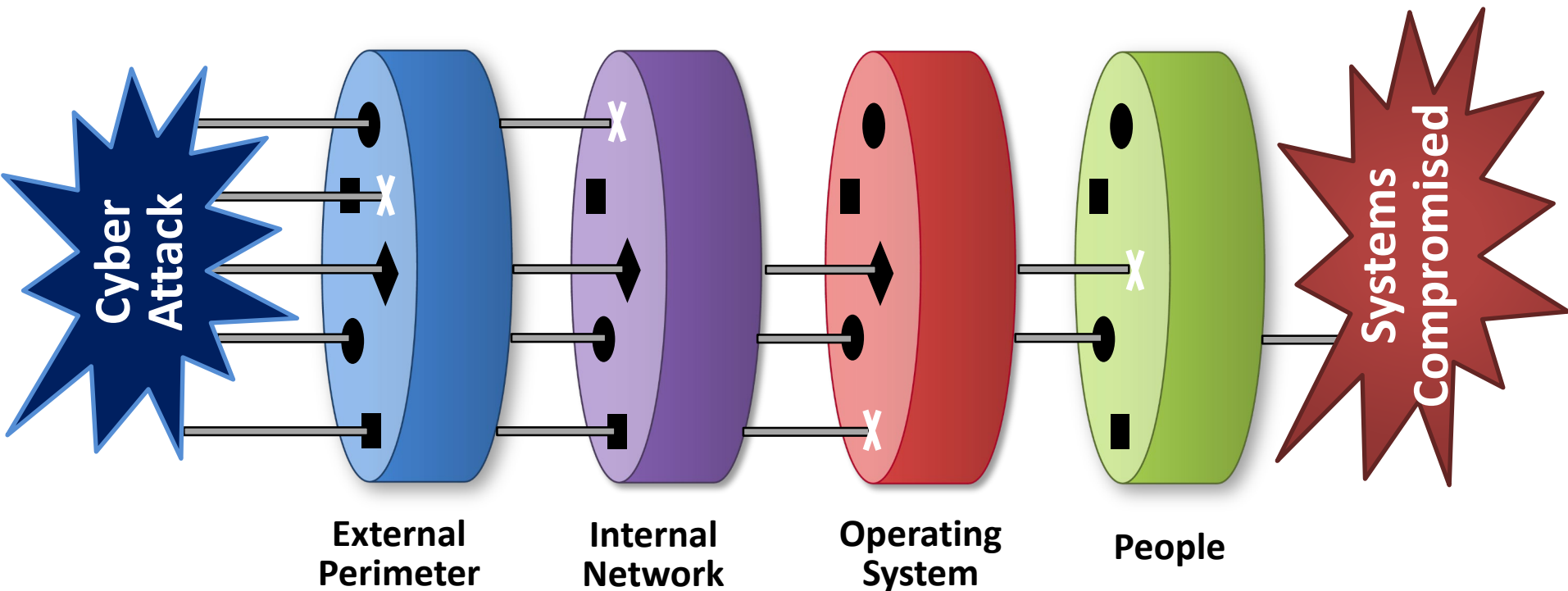
- *“The Government was dead.”* Minister of Infrastructure Ukraine

- *“I saw a wave of screens turning black. Black, black, black, black, black.”* Maersk Employee

Other Speaker Slides

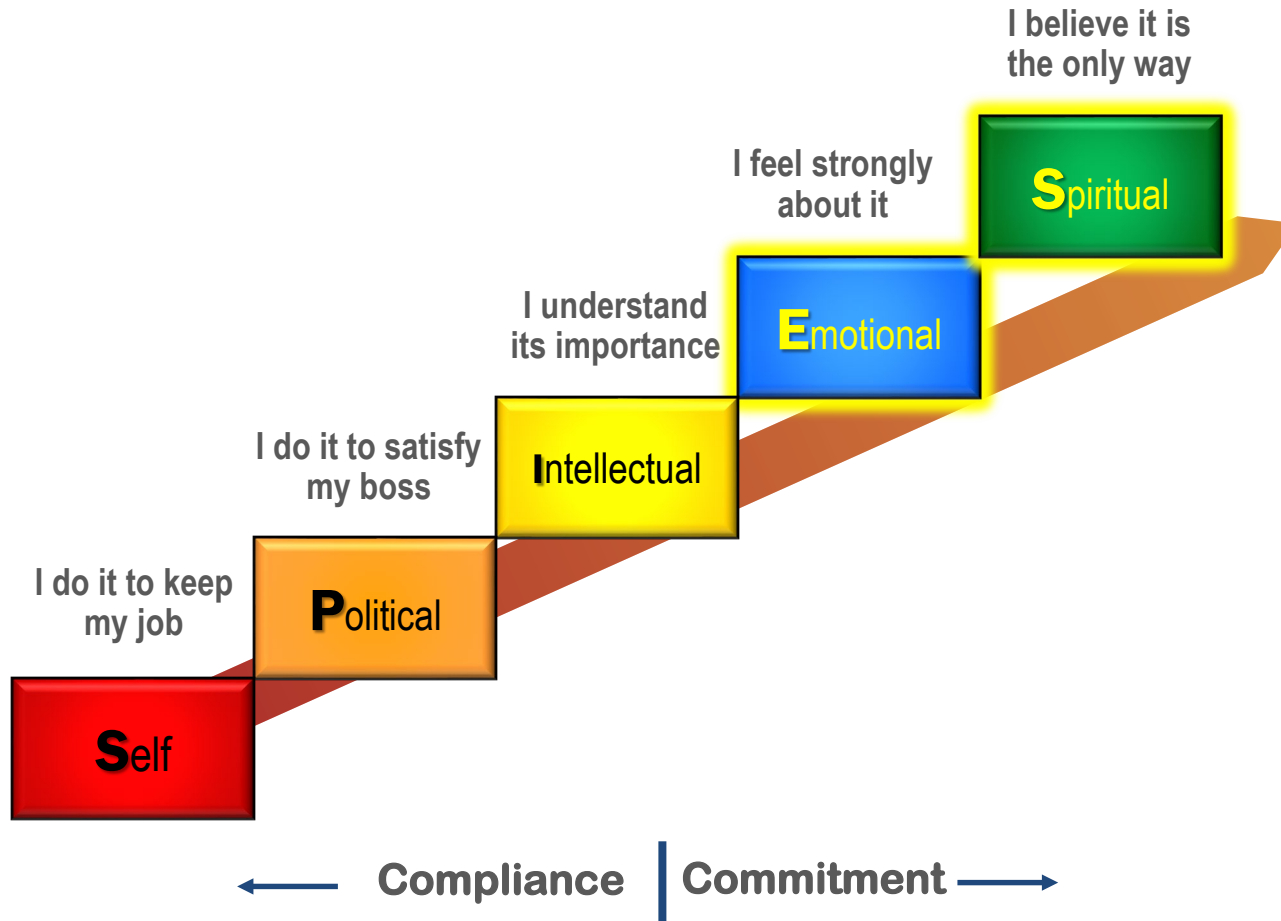
Fortification Strategy Based on Layers of Protection

Appropriate implementation and management of barriers mitigates risk



S.P.I.E.S. Model

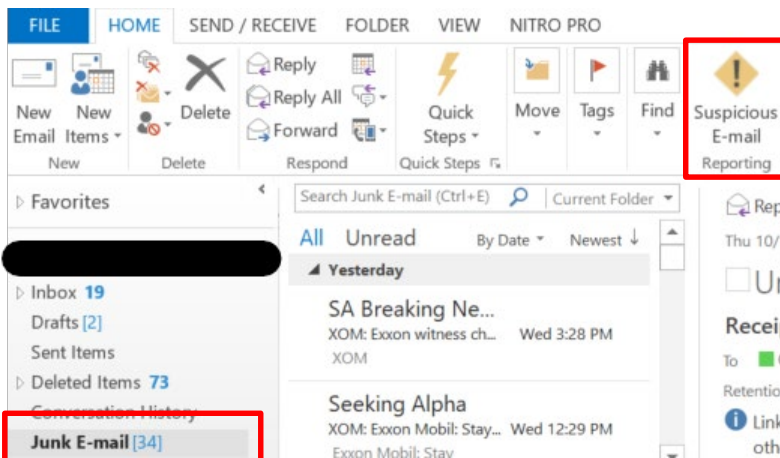
Leadership requires personal commitment before you can build workforce commitment



Fortification Key Focus: People



- People are our last line of defense
- “One Click” video series
 - Professionally produced videos
- MS Outlook
 - Safe senders / suspicious email
- Mock Phishing
 - Multiple failures = internet revoked
- Mandatory Training

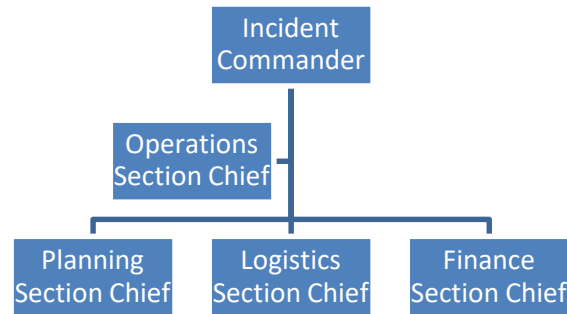


Response and Recovery Supported by Formal Team



Safety
Event

Incident Management Team



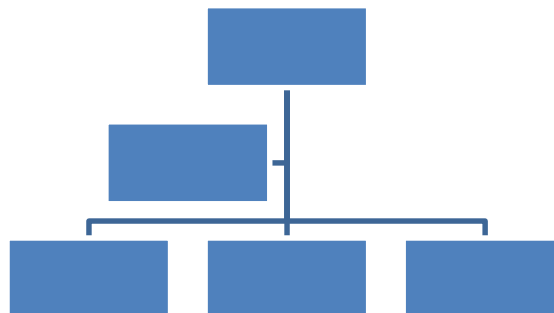
- Formal team established to support recovery from cyber event

- Modeled after safety incident management team

- Objectives:

- Preparedness
- Containment
- Enablers
- Recovery

Cyber Business Response Team



Cyber
Event